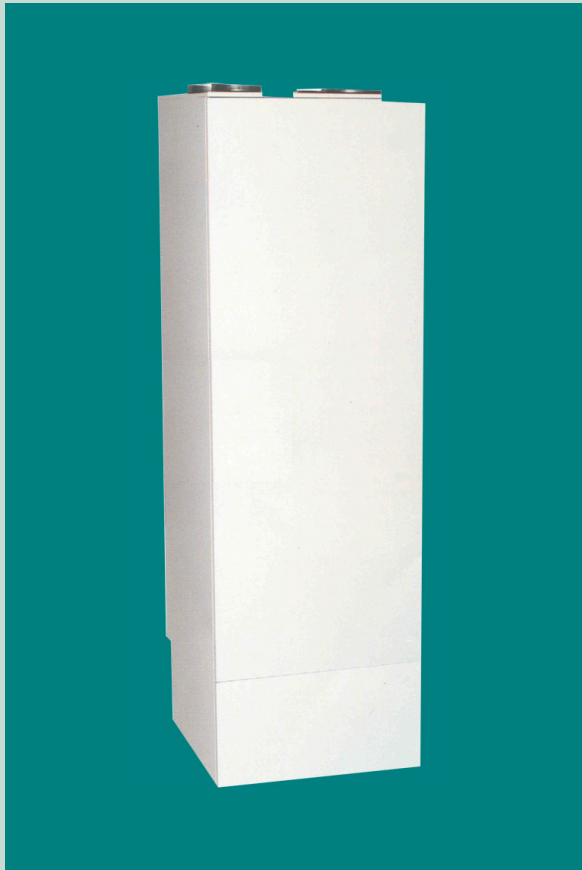


Air to Air & Air to Water Heat Pump HP1000 series

A complete heating solution for the smaller dwelling. Provides a continuous heating capacity of 1.50kW for space heating and 0.50kW for domestic water with integrated MVHR for its heat source to improve the Coefficient of Performance. It uses a reverse refrigeration process to transfer heat from used air into its water store and to fresh air. This is much more efficient than conventional heating, typically using only one third of the energy. Inlet and outlet air ducting gives flexibility in location.

- Low energy heating
- Typical Coefficient of Performance of 3
- Mains pressure
- 180 Litres capacity



Characteristics

- Typical Coefficient of Performance of 3, giving a fuel saving of 67%, plus the advantage of MVHR.
- Can be installed in a garage, utility room, cupboard or other convenient space.
- Suitable for new build and renovation.
- Similar size to an upright refrigerator: 60cm width, 60cm depth, 200cm height.
- Water storage capacity: 180 Litres.
- Provides hot water at mains pressure for excellent showers and fast baths.
- Where the size of the dwelling requires a greater heating capacity it can be used as the prime heating system, augmented with direct electric panel heaters.
- Improves dwelling SAP and CfSH ratings.

Technical data

Dimensions:

| | |
|------------------------------|------------------|
| H(without feet) x W x D (mm) | 1800 x 600 x 600 |
| Duct size | Ø160mm |
| Voltage | 230V |
| Coefficient of Performance | 3.00 |
| Weight | 150kg |

Heat output:

| | |
|---------------|--------|
| Water heating | 1.50kW |
| Space Heating | 0.50kW |
| Extra heater | 1.00kW |

Power Consumed:

| | |
|--------------------------------|-------------|
| Watt consumption, fan* | 28 to 106W |
| Watt consumption, compressor** | 315 to 495W |

| | |
|-----------------------------|----------------------------------|
| Coolant | R134a |
| Coolant vol. | 975g |
| Coolant vol: cooling option | 1000g |
| Hot water tank capacity | 180L |
| Sanitary connections | ¾" |
| Maximum water temperature | 65(85)°C |
| Max tank pressure | 10bar |
| Corrosion protection | 2 layer Glass coating + Anode |

* Fan type, g2e 140 pl 40-01; step1-step4

** Compressor type, SC 15 GH (operation-related)

Design Features

